

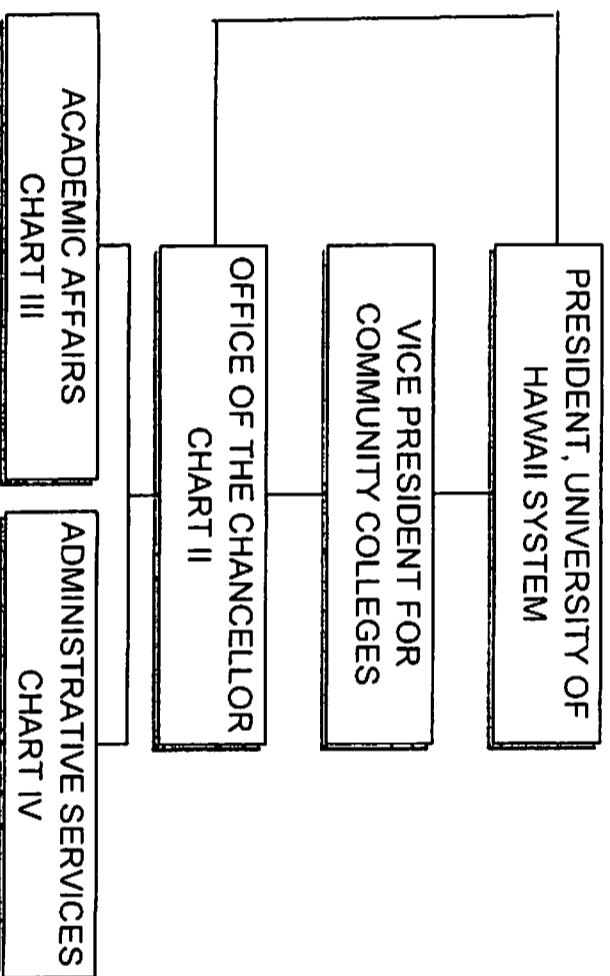
APPROVED

**ORGANIZATIONAL CHARTS
AND
FUNCTIONAL STATEMENTS**


STATE OF HAWAII
UNIVERSITY OF HAWAII
COMMUNITY COLLEGES
LEEWARD COMMUNITY COLLEGE

ORGANIZATION CHART

CHART I



APPROVED:


John Morton
VP for Community Colleges

JAN 26 2011

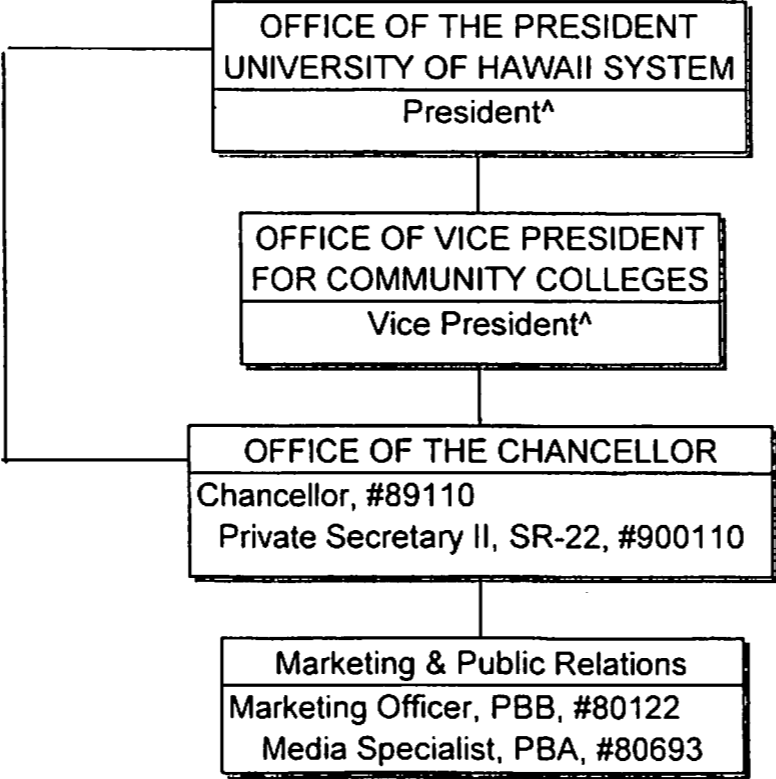
Date

	<u>PERM</u>	<u>TEMP</u>
GENERAL FUND	330.00	2.00
(B) SPECIAL FUND	16.00	

STATE OF HAWAII
UNIVERSITY OF HAWAII
COMMUNITY COLLEGES
LEEWARD COMMUNITY COLLEGE
OFFICE OF THE CHANCELLOR

POSITION ORGANIZATION CHART

CHART II



APPROVED:

John Morton
VP for Community Colleges

JAN 26 2011

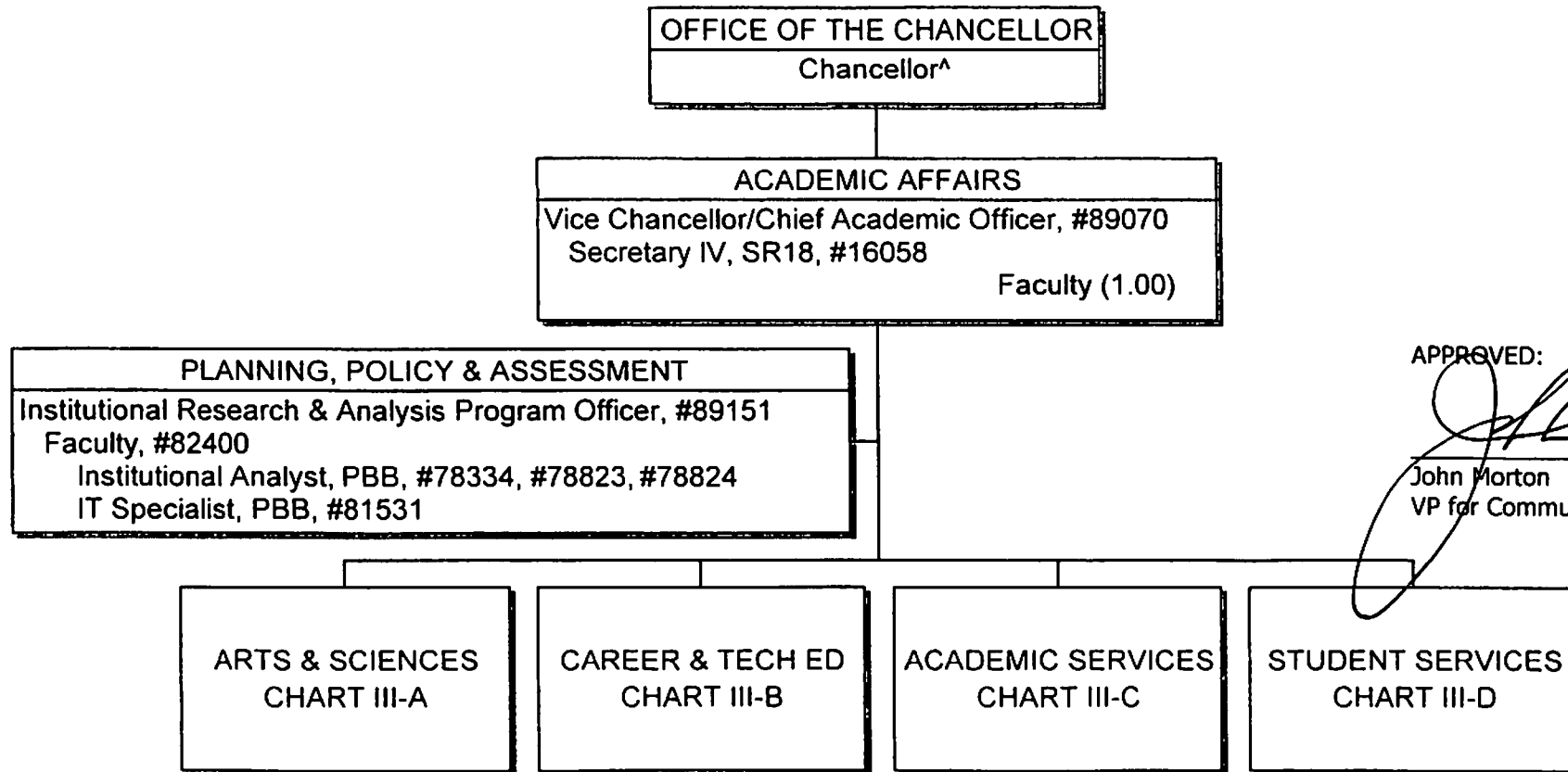
Date

^Excluded from position count this chart

STATE OF HAWAII
 UNIVERSITY OF HAWAII
 COMMUNITY COLLEGES
 LEEWARD COMMUNITY COLLEGE
 ACADEMIC AFFAIRS

POSITION ORGANIZATION CHART

CHART III



APPROVED:

[Signature]
 John Morton
 VP for Community Colleges

JAN 26 2011

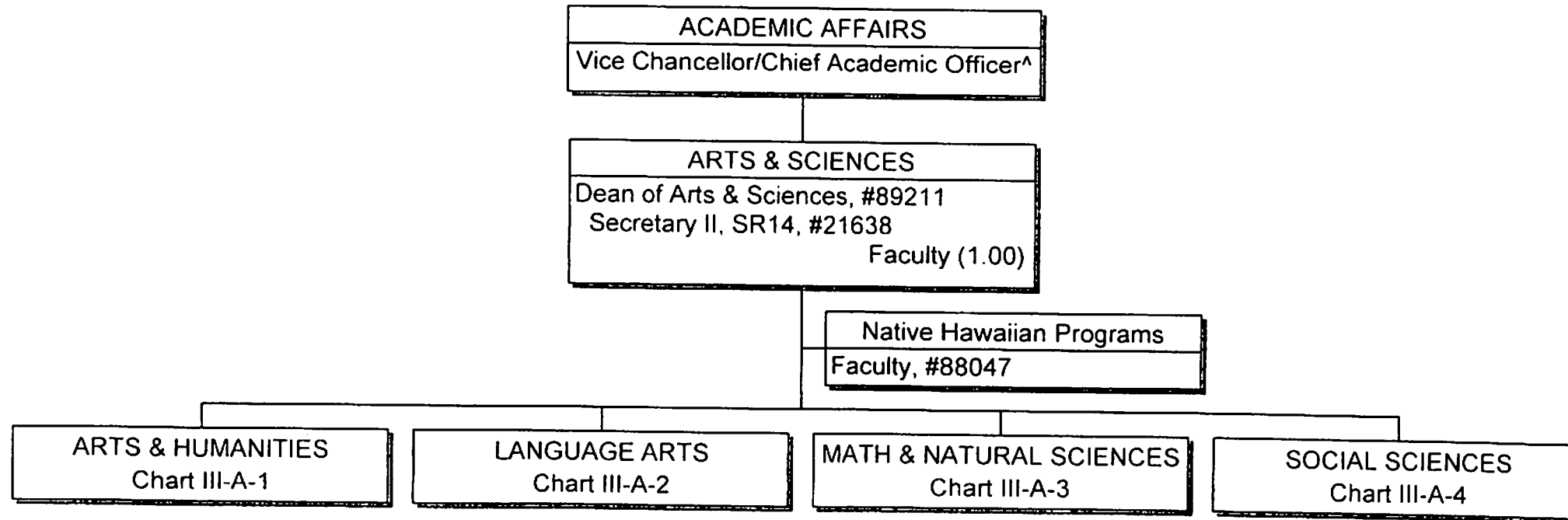
Date

^Excluded from position count this chart

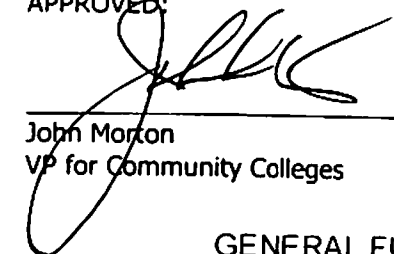
STATE OF HAWAII
UNIVERSITY OF HAWAII
COMMUNITY COLLEGES
LEEWARD COMMUNITY COLLEGE
ACADEMIC AFFAIRS
ARTS & SCIENCES

ORGANIZATION CHART

CHART III-A



APPROVED:


John Morton
VP for Community Colleges

JAN 26 2003

Date

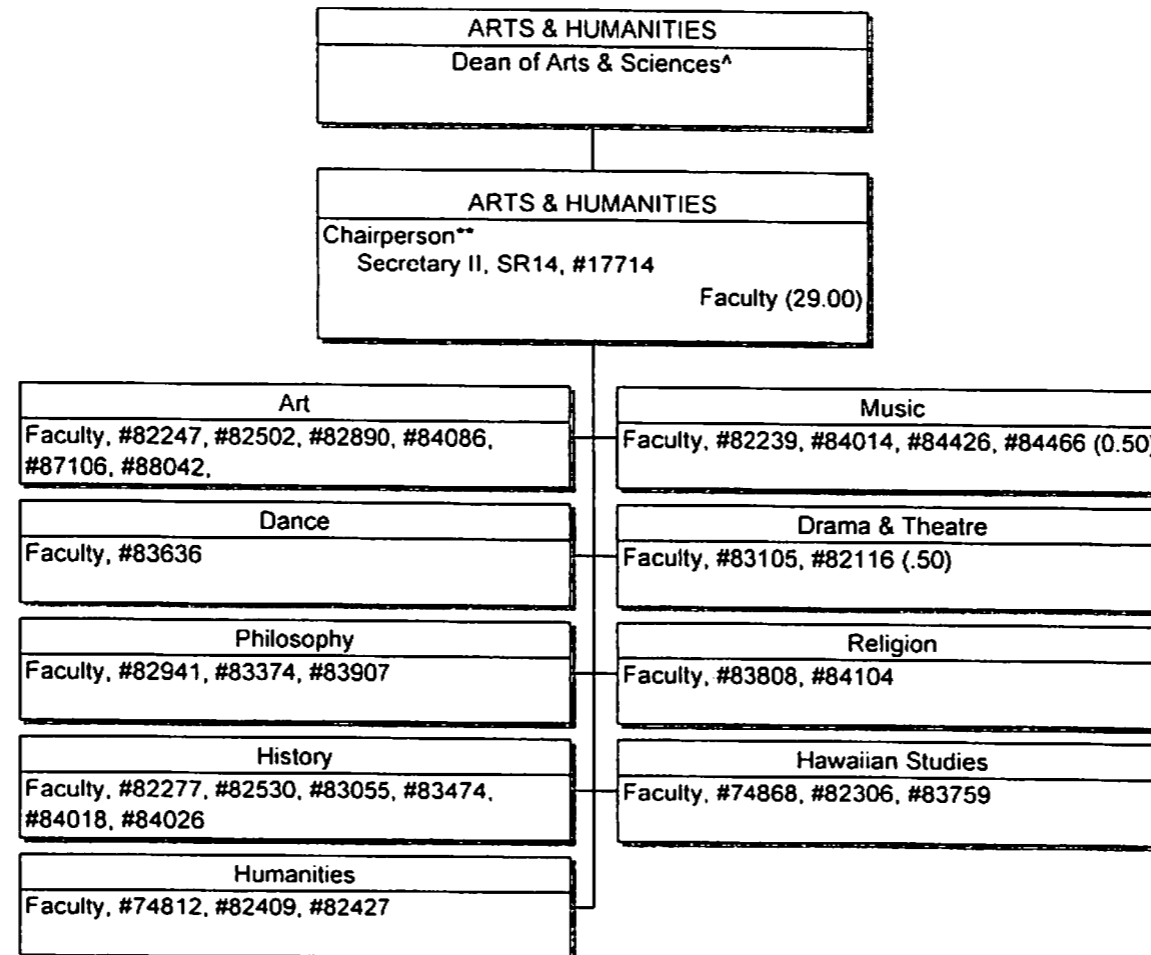
PERM
GENERAL FUND 3.00

^Excluded from position count this chart

STATE OF HAWAII
 UNIVERSITY OF HAWAII
 COMMUNITY COLLEGES
 LEEWARD COMMUNITY COLLEGE
 ACADEMIC AFFAIRS
 ARTS & SCIENCES

POSITION ORGANIZATION CHART

CHART III-A-1



APPROVED:

[Handwritten Signature]
 John Morton
 VP for Community Colleges

JAN 26 2011

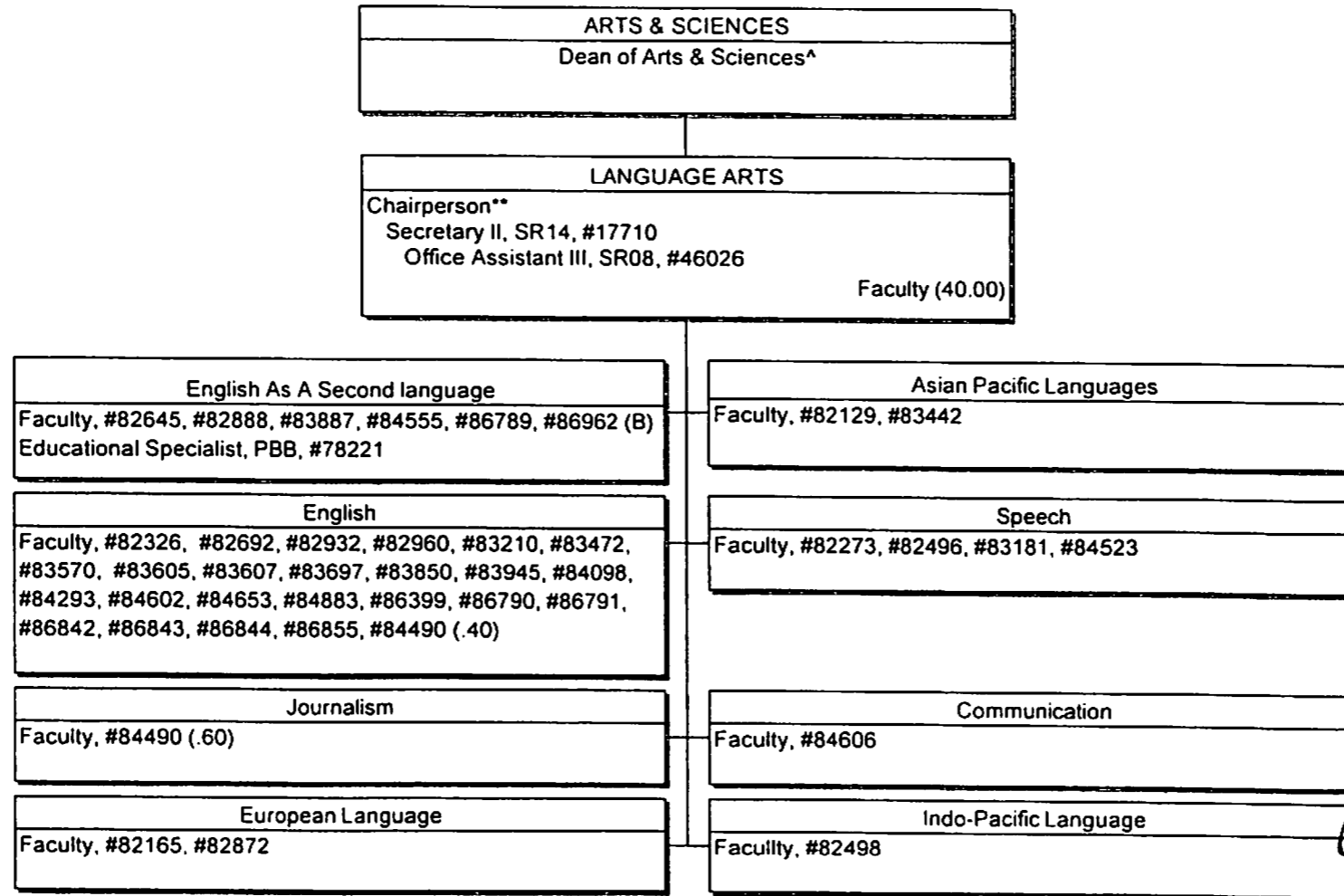
Date

**Chairperson is appointed from a faculty position within the unit
 ^Excluded from position count this chart

STATE OF HAWAII
 UNIVERSITY OF HAWAII
 COMMUNITY COLLEGES
 LEEWARD COMMUNITY COLLEGE
 ACADEMIC AFFAIRS
 ARTS & SCIENCES

POSITION ORGANIZATION CHART

CHART III-A-2



APPROVED:

John Morton

John Morton
 VP for Community Colleges

JAN 26 2011

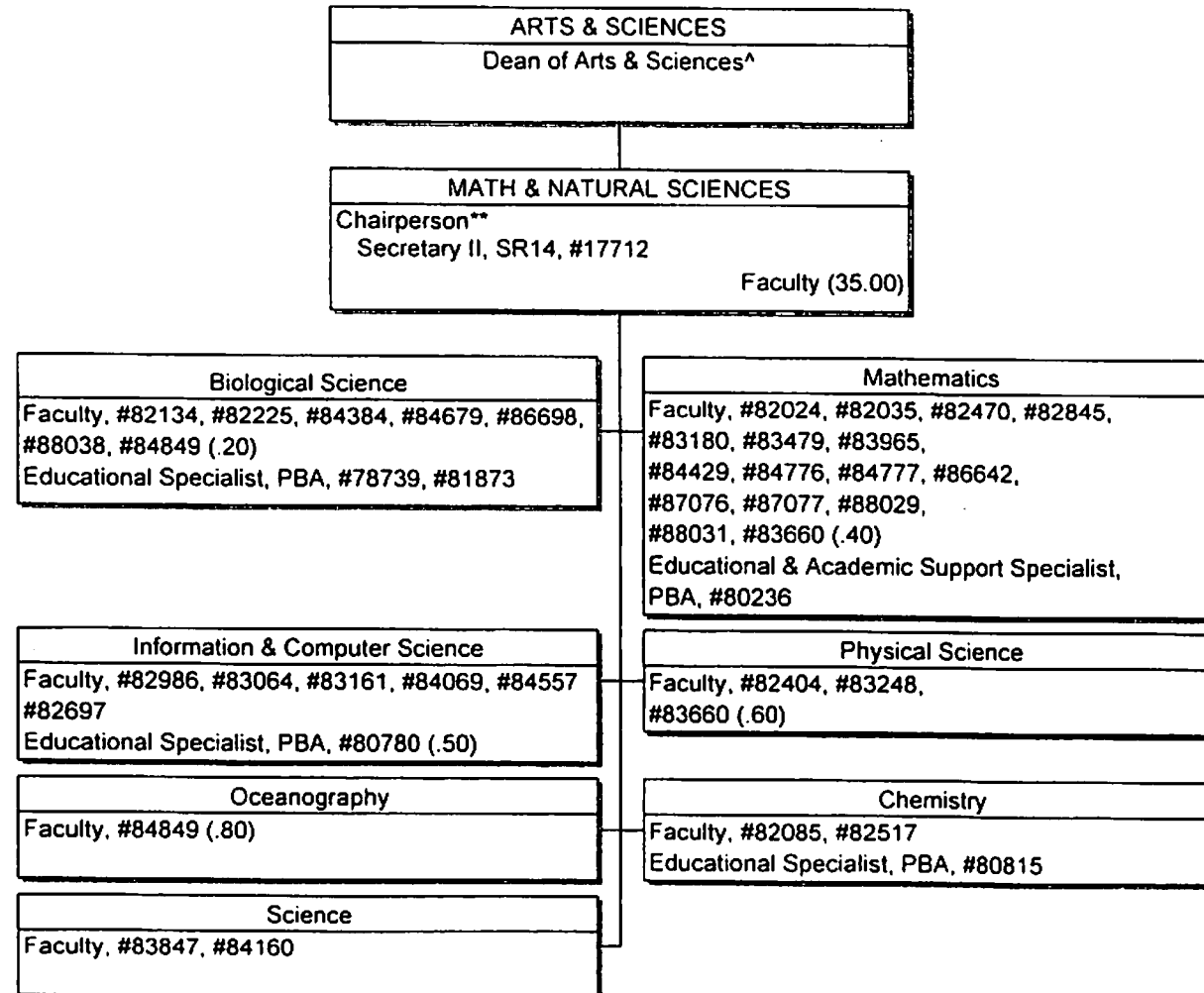
Date

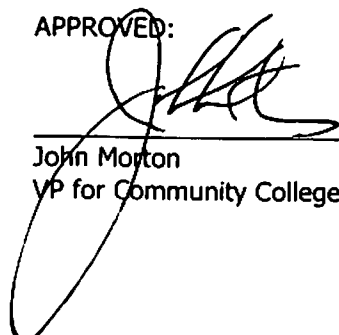
**Chairperson is appointed from a faculty position within the unit
 ^Excluded from position count this chart

STATE OF HAWAII
 UNIVERSITY OF HAWAII
 COMMUNITY COLLEGES
 LEEWARD COMMUNITY COLLEGE
 ACADEMIC AFFAIRS
 ARTS & SCIENCES

POSITION ORGANIZATION CHART

CHART III-A-3



APPROVED:  JAN 26 2011

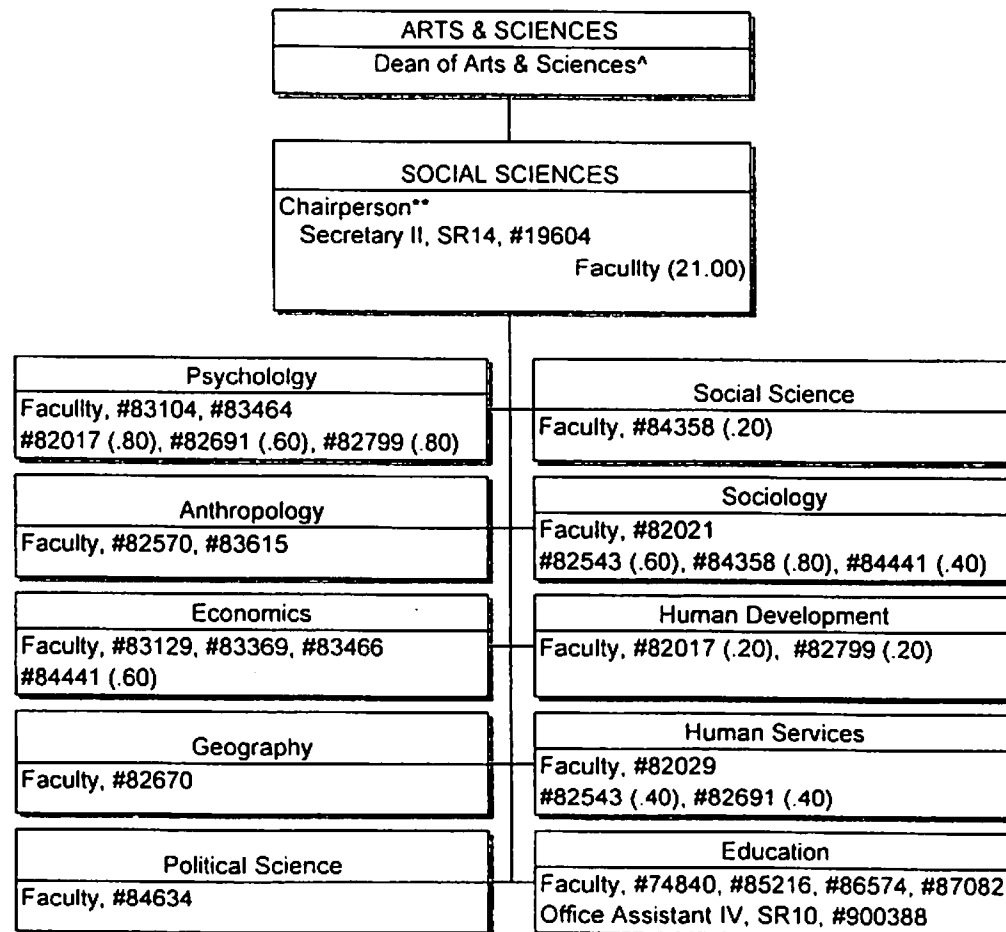
John Morton Date
 VP for Community Colleges

**Chairperson is appointed from a faculty position within the unit
 ^Excluded from position count this chart

STATE OF HAWAII
 UNIVERSITY OF HAWAII
 COMMUNITY COLLEGES
 LEEWARD COMMUNITY COLLEGE
 ACADEMIC AFFAIRS
 ARTS & SCIENCES

POSITION ORGANIZATION CHART

CHART III-A-4



APPROVED:

[Signature]
 John Morton
 VP for Community Colleges

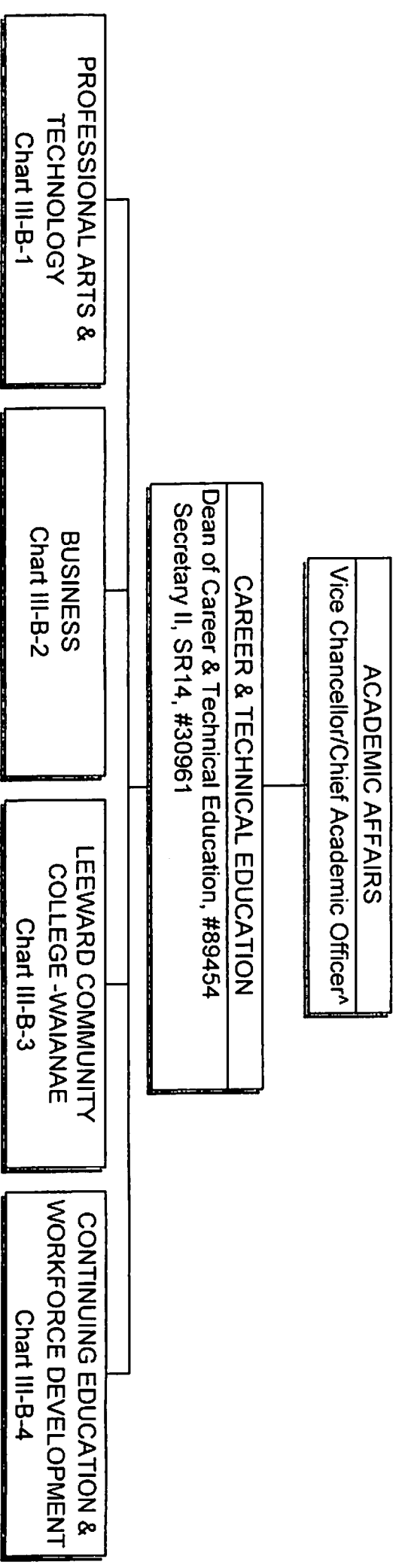
JAN 26 2011

Date

**Chairperson is appointed from a faculty position within the unit
 ^Excluded from position count this chart

STATE OF HAWAII
UNIVERSITY OF HAWAII
COMMUNITY COLLEGES
LEEWARD COMMUNITY COLLEGE
ACADEMIC AFFAIRS
CAREER & TECHNICAL EDUCATION

ORGANIZATION CHART
CHART III-B



APPROVED:

John Mgrton
VP for Community Colleges

JAN 26 2011

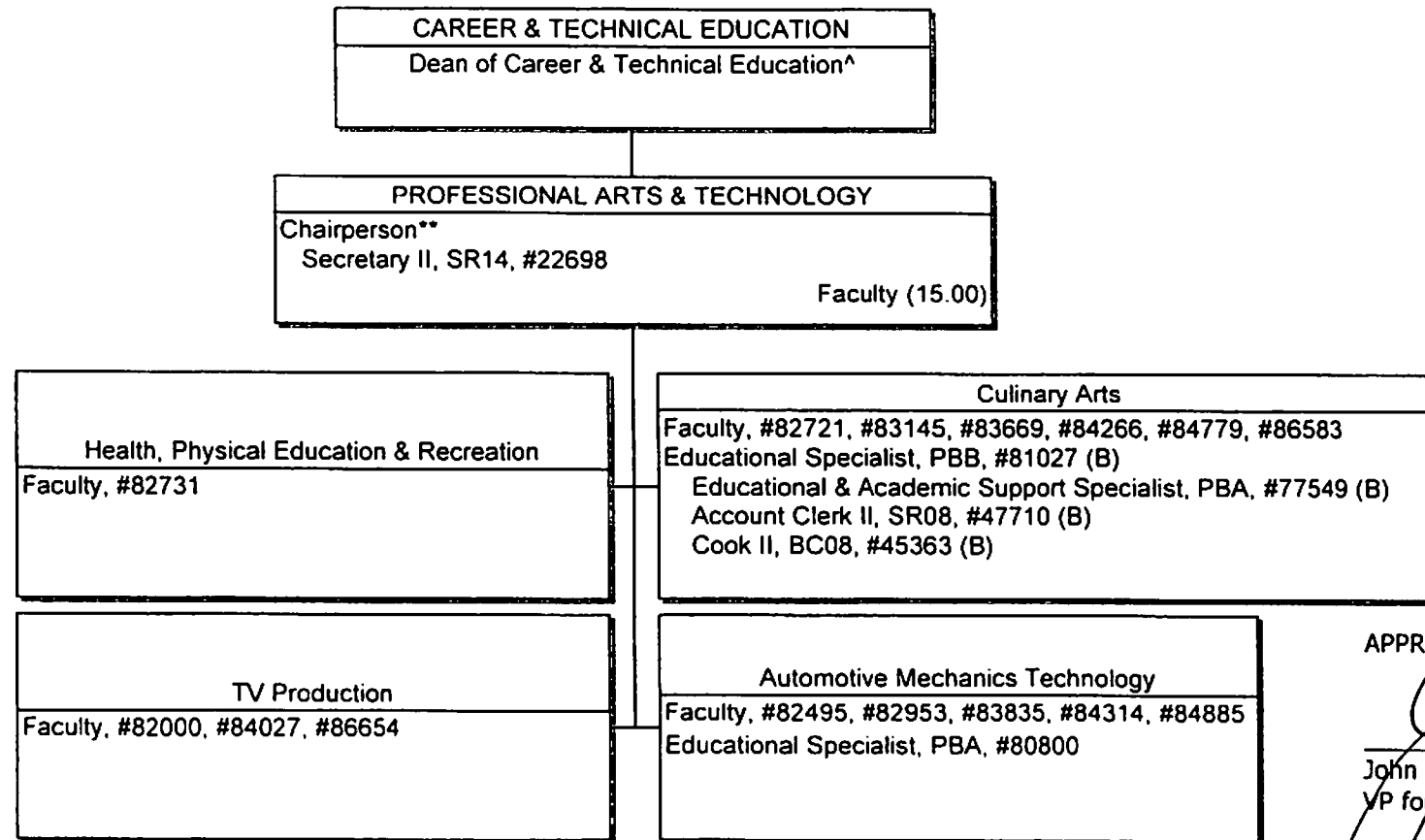
Date

^ Excluded from position count this chart

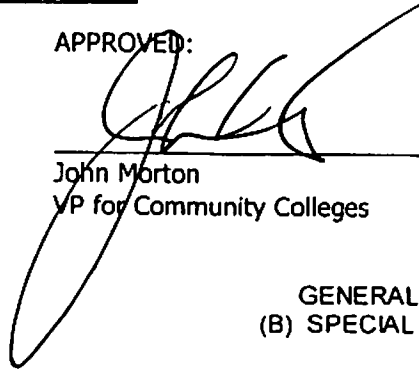
STATE OF HAWAII
 UNIVERSITY OF HAWAII
 COMMUNITY COLLEGES
 LEEWARD COMMUNITY COLLEGE
 ACADEMIC AFFAIRS
 CAREER & TECHNICAL EDUCATION

POSITION ORGANIZATION CHART

CHART III-B-1



APPROVED:


 John Morton
 VP for Community Colleges

JAN 26

Date

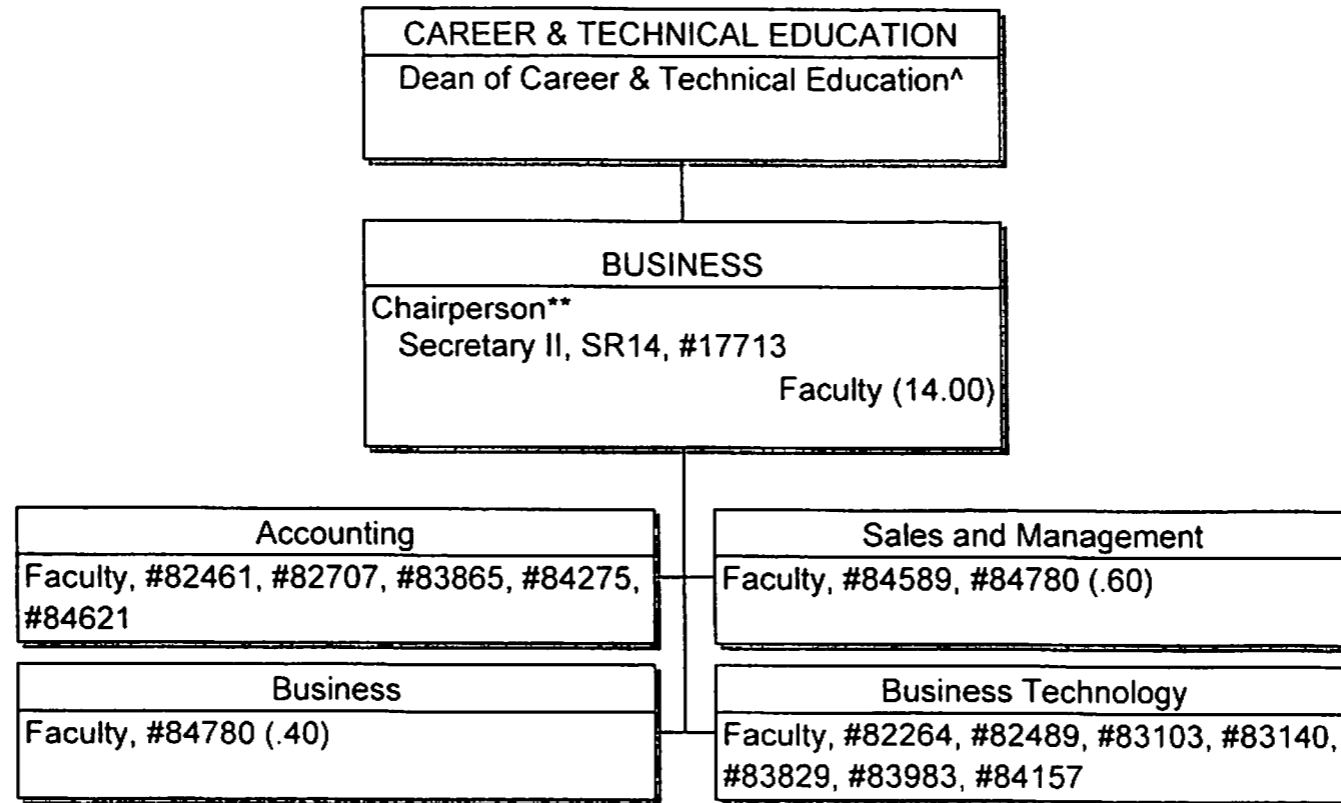
**Chairperson is appointed from a faculty position within the unit
 ^Excluded from position count this chart

	<u>PERM</u>
GENERAL FUND	17.00
(B) SPECIAL FUNDS	4.00

STATE OF HAWAII
 UNIVERSITY OF HAWAII
 COMMUNITY COLLEGES
 LEEWARD COMMUNITY COLLEGE
 ACADEMIC AFFAIRS
 CAREER & TECHNICAL EDUCATION

POSITION ORGANIZATION CHART

CHART III-B-2



APPROVED:

[Signature]
 John Morton
 VP for Community Colleges

JAN 26 2011

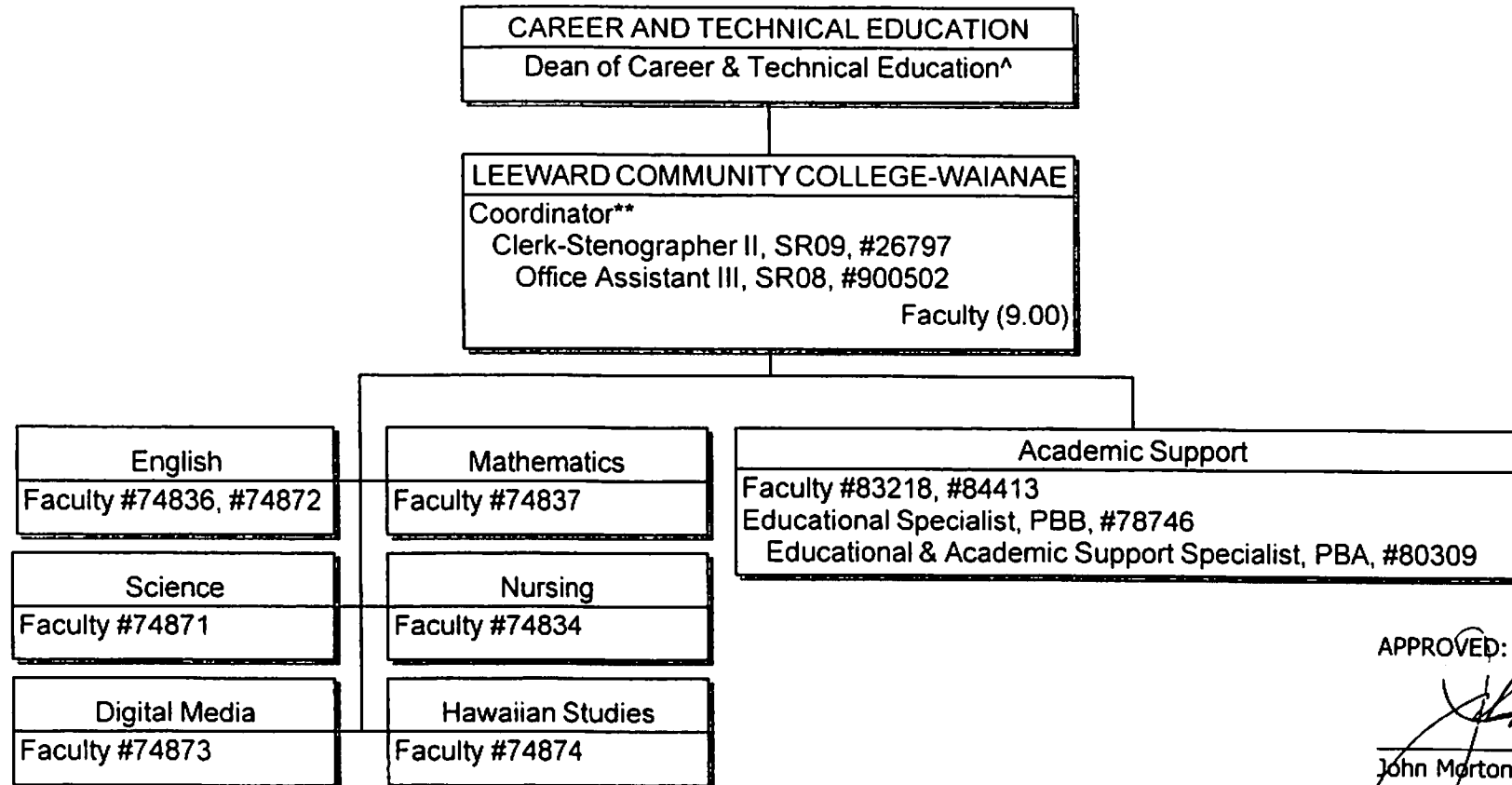
Date

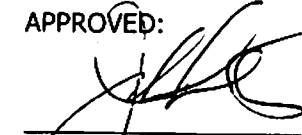
**Chairperson is appointed from a faculty position within the unit
 ^Excluded from position count this chart

STATE OF OHAWAII
 UNIVERSITY OF HAWAII
 COMMUNITY COLLEGES
 LEEWARD COMMUNITY COLLEGE
 ACADEMIC AFFAIRS
 CAREER & TECHNICAL EDUCATION

POSITION ORGANIZATION CHART

CHART III-B-3



APPROVED:

 John Morton
 VP for Community Colleges

JAN 26 2011
 Date
 PERM
 13.00

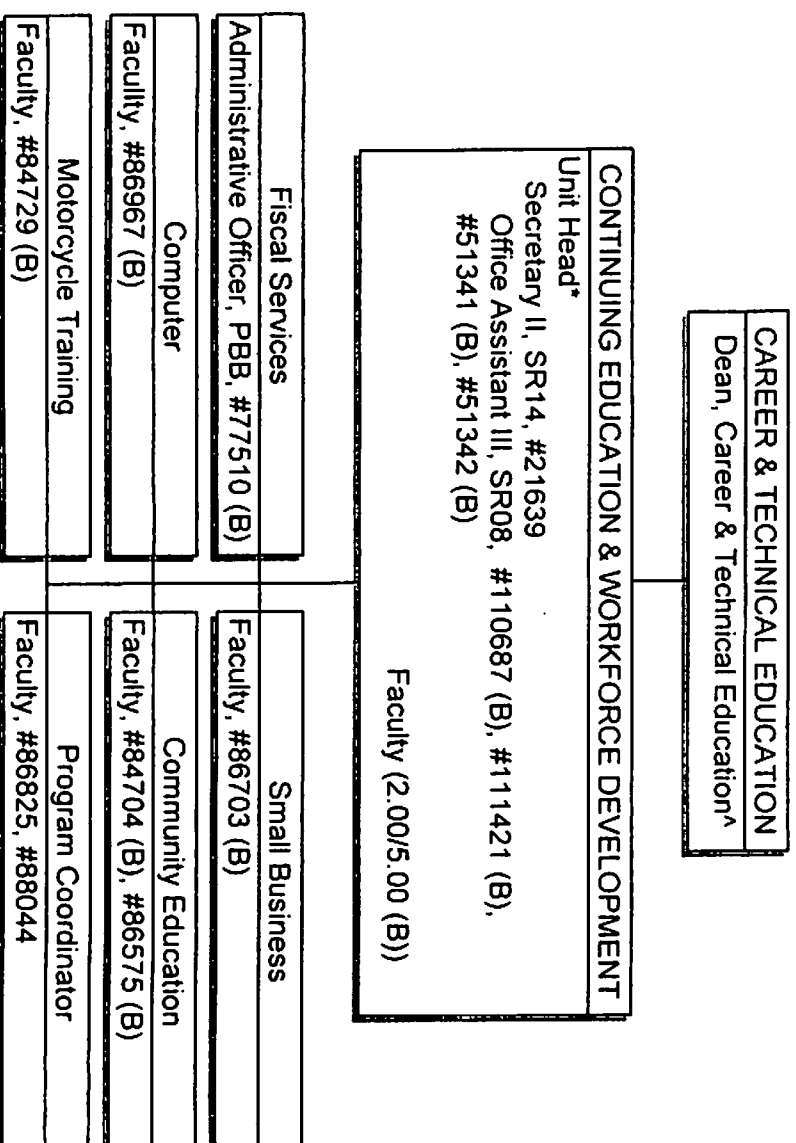
**Coordinator is appointed from a faculty position within the unit
 ^Excluded from position count this chart

GENERAL FUND

STATE OF HAWAII
 UNIVERSITY OF HAWAII
 COMMUNITY COLLEGES
 LEEWARD COMMUNITY COLLEGE
 ACADEMIC AFFAIRS
 CONTINUING EDUCATION & WORKFORCE DEVELOPMENT

POSITION ORGANIZATION CHART

CHART III-B-4



APPROVED:

[Signature]
 John Morton
 VP for Community Colleges

JAN 26 2003

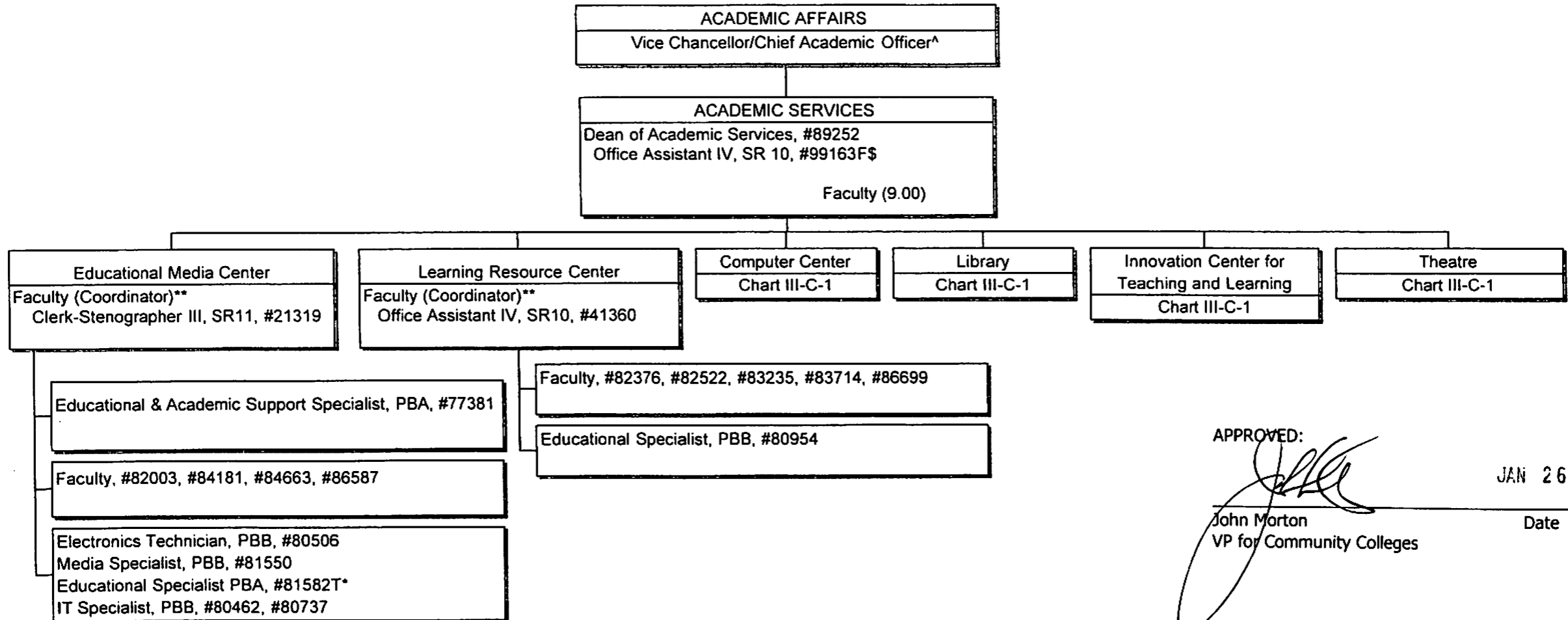
Date

PERM 3.00
 GENERAL FUND
 (B) SPECIAL FUND 10.00

*Excluded from position count this chart
 *Appointed from faculty of unit

STATE OF HAWAII
 UNIVERSITY OF HAWAII
 COMMUNITY COLLEGES
 LEEWARD COMMUNITY COLLEGE
 ACADEMIC AFFAIRS
 ACADEMIC SERVICES

POSITION ORGANIZATION CHART
 CHART III-C



APPROVED:

John Morton
 VP for Community Colleges

JAN 26 2011

Date

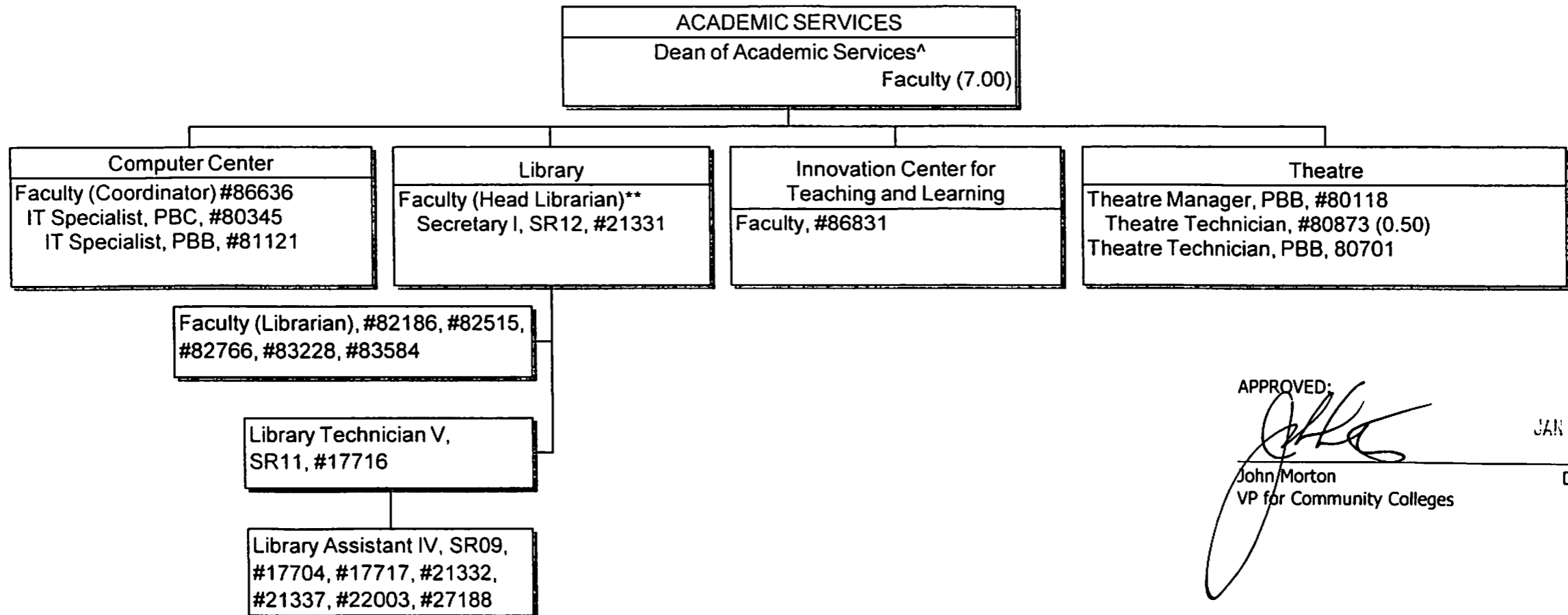
**Coordinator is appointed from a faculty position within the unit
 *Temporary
 ^Excluded from position count this chart
 \$To be established

GENERAL FUND	PERM	TEMP
	19.00	1.00

STATE OF HAWAII
 UNIVERSITY OF HAWAII
 COMMUNITY COLLEGES
 LEEWARD COMMUNITY COLLEGE
 ACADEMIC AFFAIRS
 ACADEMIC SERVICES

POSITION ORGANIZATION CHART

CHART III-C-1



APPROVED:

[Signature]
 John Morton
 VP for Community Colleges

JAN 26 2011

Date

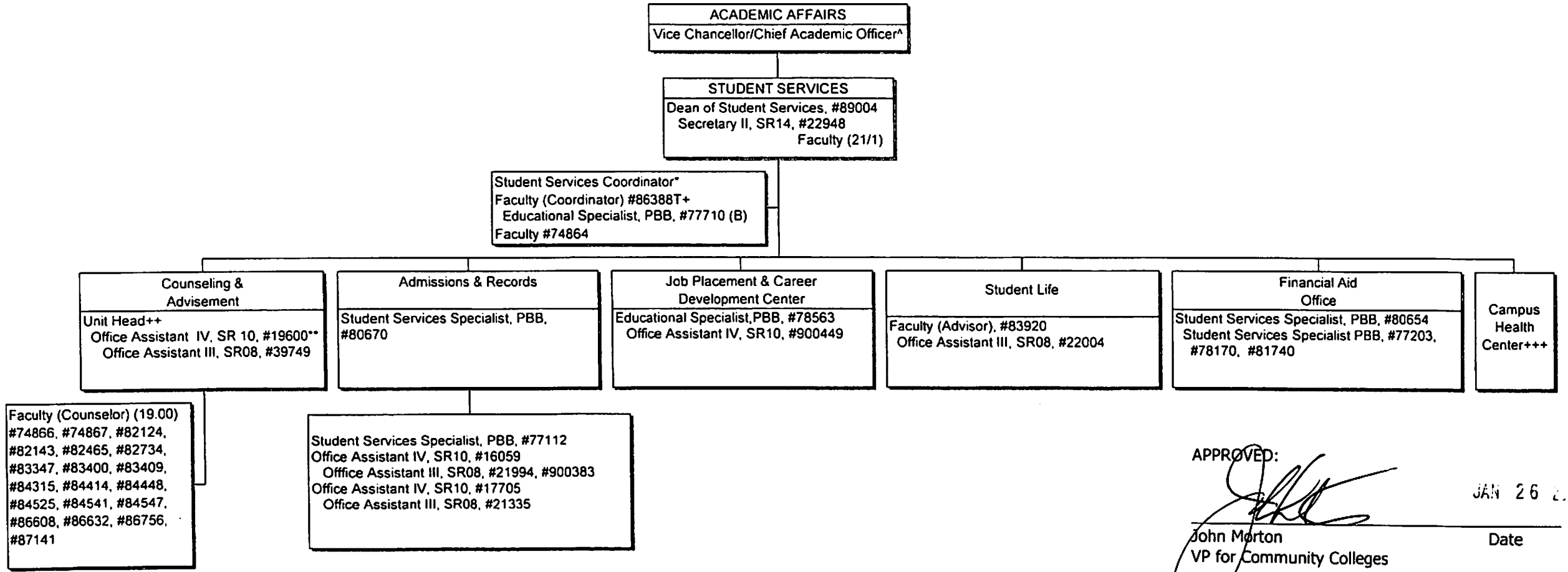
^Excluded from position count this chart

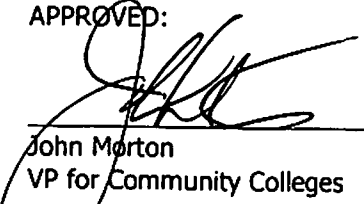
**Head Librarian is appointed from a faculty position within the unit

STATE OF HAWAII
 UNIVERSITY OF HAWAII
 COMMUNITY COLLEGE
 ACADEMIC SERVICES
 STUDENT SERVICES

POSITION ORGANIZATION CHART

CHART III-D



APPROVED:  JAN 26 2008
 John Morton Date
 VP for Community Colleges

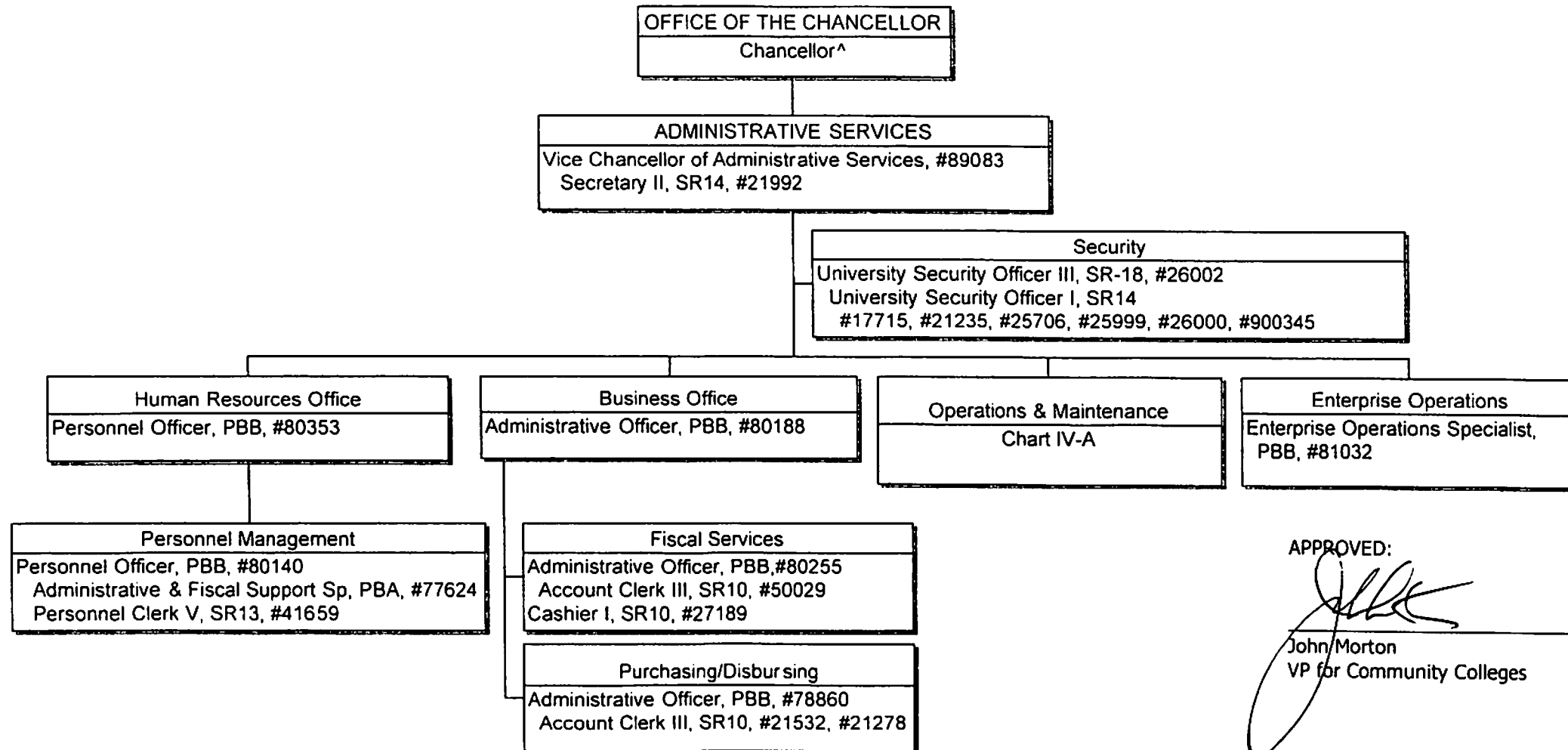
+++Services provided on a contractual basis
 ++Unit Head is appointed by Dean of Student Services upon recommendation of faculty
 *Coordinator is appointed from a faculty position within the unit
 **Position to be redescribed and submitted for update.
 ^Excluded from position count this chart
 +Temporary

	PERM	TEMP
GENERAL FUND	39.00	1.00
(B) SPECIAL FUND	1.00	

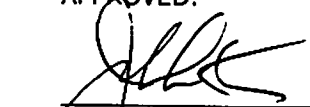
STATE OF HAWAII
 UNIVERSITY OF HAWAII
 COMMUNITY COLLEGES
 LEEWARD COMMUNITY COLLEGE
 ADMINISTRATIVE SERVICES

POSITION ORGANIZATION CHART

CHART IV



APPROVED:


 John Morton
 VP for Community Colleges

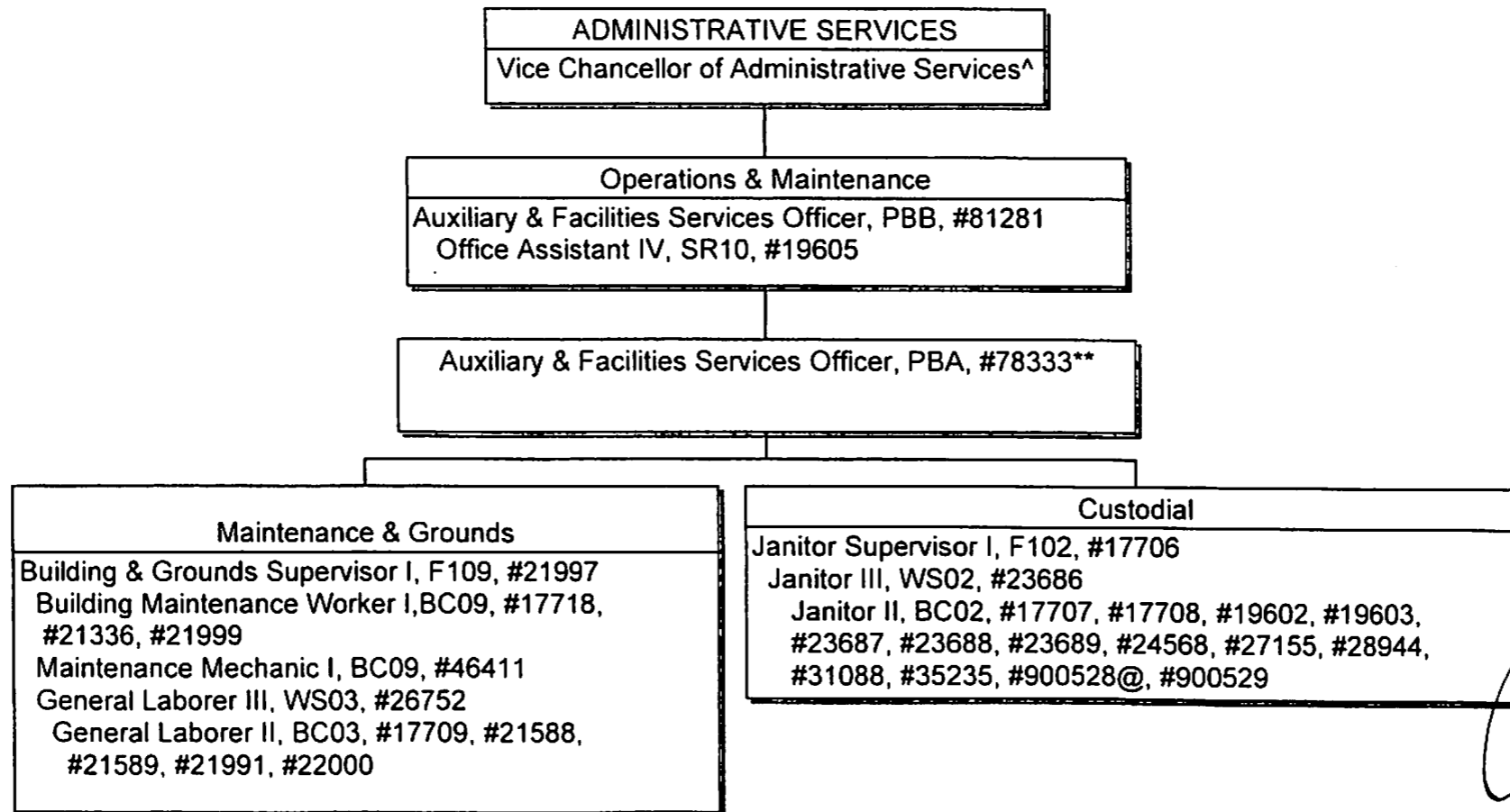
JAN 26 2011
 Date

^Excluded from position count this chart

STATE OF HAWAII
 UNIVERSITY OF HAWAII
 COMMUNITY COLLEGES
 LEEWARD COMMUNITY COLLEGE
 ADMINISTRATIVE SERVICES

POSITION ORGANIZATION CHART

CHART IV-A



APPROVED:

John Morton
 VP for Community Colleges

JAN 26 2011

Date

^Excluded from position count this chart

@Assign to Waianae-Nanakuli Education Center

**Position to be redescribed and submitted for update

GENERAL FUND

PERM
 30.00